

Quick Guide

This Quick Guide tells you how to set up your network camera and use its key features.

Ready, set up, go!

Connect The Camera To Your Network

First time to start network camera, connect your camera to your router with a network cable.



Install Camera Softwares

Insert the CD and install the softwares.



Then you'll see the icons on the desktop.



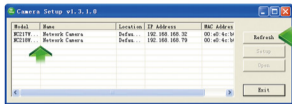
Important

Please read this manual carefully before installation.

Start Here

View on PC

Double Click  then appear:



The router automatically gives your camera an IP address. If not, click "refresh" till it shows up. Double Click the **IP address** to run the camera. Then it appears:



Click "Enter", in the verification box:
User Name: admin
Password: admin
Click "OK" and enjoy yourselves!

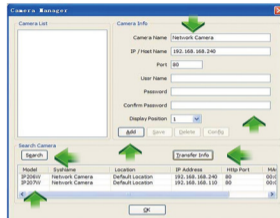


Multi-Live

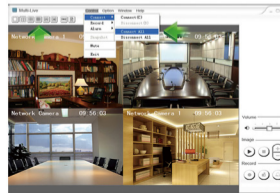
Double Click  then appear:



Click "Option" then "Camera Manager", then appear:

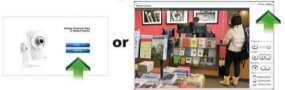


"Search", Choose camera "Transfer Info"
User Name: **admin** Password: **admin**
Change Camera name, Then "Add", "OK"
Then "Control", "Connect", "Connect All"
you'll see:

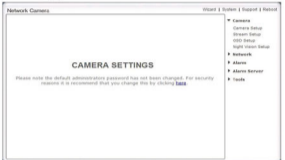


Wireless Setup

Click on "Setting".



Then appear:



Click "Network", then "Wireless Setup".



Click "Enable", then appear:



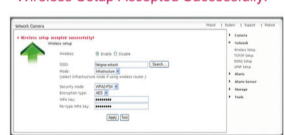
Click "Search", then appear:



Choose **your router SSID**, Click "Apply", then appear "Wireless Network selected!".



Mode: choose "Infrastructure"
Security Mode: choose "AES"
Type your router **WPA (WiFi Code)** and click "Apply". Then appear: "Wireless Setup Accepted Successfully!"



Finished!
Now you can unplug the network cable!

View on Android

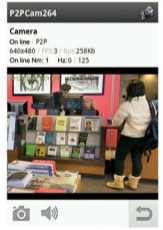
Install software "P2PCam 264"



Open it, you'll see:



Type the **UID** or Scan the **UID**. Input **password**, and **name**. Then click "Save".



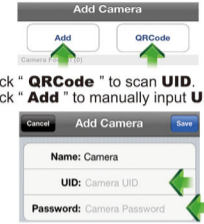
For snapshots For hearing the voice
 For back to manu.

View on iPhone, iPad

Install software "P2PCam 264"

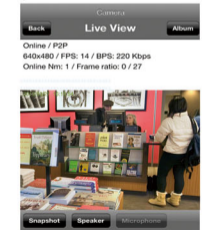


Open it, you'll see:



Click "QRCode" to scan **UID**.
Click "Add" to manually input **UID**.

Input "**UID**" and "**Password**".
Then you'll see:



"**Snapshot**" for getting pictures.
"**Speaker**" for hearing the voice.